

Data sheet

# SONDEX® Fully welded plate heat exchangers (SAW)

Description



SONDEX® Fully welded plate heat exchangers (SAW) are designed to handle extremely aggressive and demanding media and achieve very close temperature approaches with a true counter-current design. Very small and compact, they are the perfect solution for applications and duties that require a fully welded product, such as a plate and shell or block-type heat exchanger, but do not need their substantial capacities. A product that perfectly matches the specifications of the task will always be the optimal solution. In their class, the fully welded series outperform shell and tube heat exchangers in every aspect and offer all the benefits of a gasketed heat exchanger as well as increased durability.

**Benefits:**

- Very compact, cost-effective units that take up minimal floor space. They are light in weight and provide very efficient heat transfer, through the courtesy of a true counter-current flow.
- The gasket-free solutions feature a fully welded plate pack that enable them to work with very high pressure and temperatures. The risks of leaks are severely diminished with a completely welded heat exchanger.
- The plates in the completely welded plate pack are made from highly resistant materials guaranteed to withstand even the most extreme working conditions.

**Common applications:**

- HVAC industry
- Refrigeration industry
- Pulp and paper industry
- Heavy industry
- Mining industry
- Petrochemical industry
- Chemical industry

**Main data:**

- Min. temperature –10 °C (14°F)
- Max. temperature 300 °C (572°F)
- Max. working pressure 25 bar (360 psi)
- Clean fluids, steam, gases
- Connections DN50
- Diagonal flow

**Approvals:**

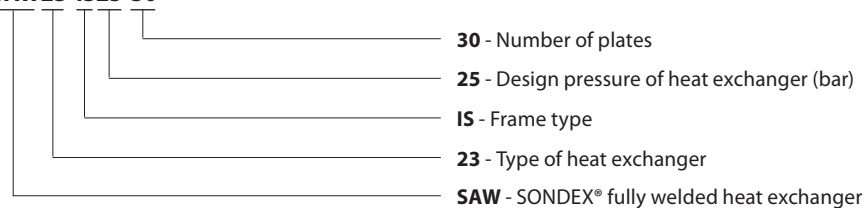
- Please contact your local Danfoss/Sondex sales representative to provide you with exact approvals availability on your region

**Pressure vessel code:**

- EN13445 (PED 2014/68/EU)
- ASME sec VIII, Div. 1
- Other standards available on request

Naming of units

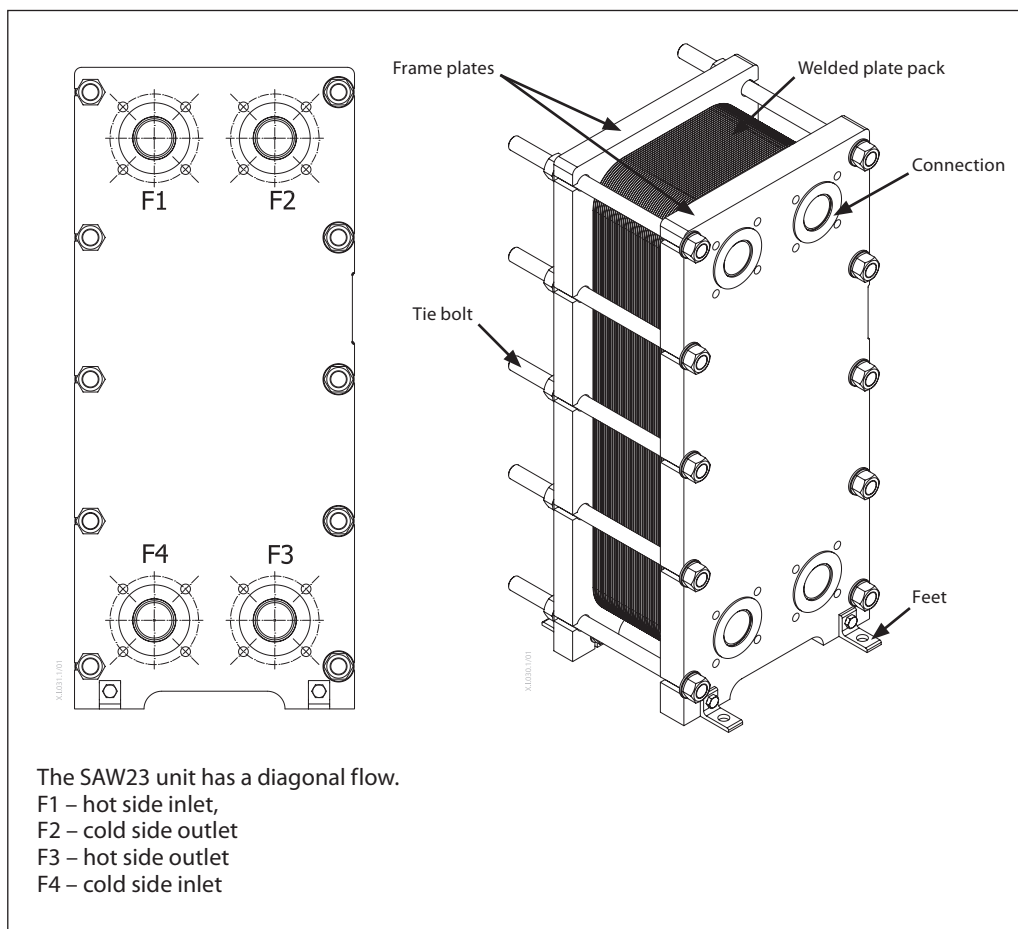
**SAW23-IS25-30**



**Heat exchanger design**

SONDEX® fully welded heat exchangers (SAW) contain a number of welded plates forming a gasket-free plate pack which is placed between two frame plates made from carbon steel and tightened with tie bolts.

SONDEX® fully welded heat exchanger SAW23



**Connections**

- DN50 flange. According to all known standards.

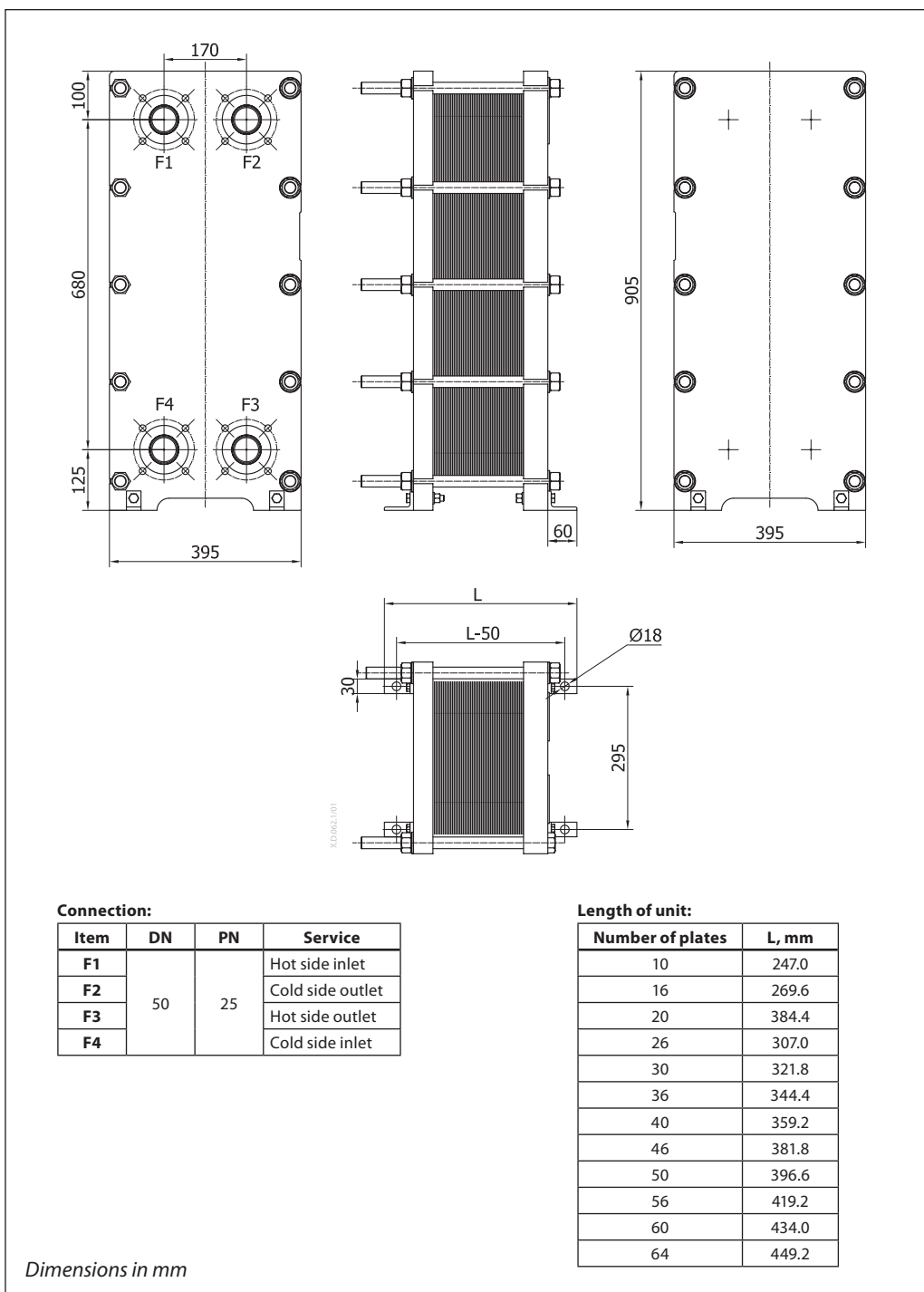
Please contact your local Danfoss or Sondex sales representative to provide you with design for SONDEX® fully welded heat exchangers.

**Technical data**

SONDEX® fully welded heat exchanger (SAW)

Type		SAW23
Max. working pressure	bar / psi	25 / 360
Min. operating temperature	°C / °F	-10 / 14
Max. operating temperature		
Connection		DN50 flange. According to all known standards.
Number of plates		10, 16, 20, 26, 30, 36, 40, 46, 50, 56, 60, 64
Plate material		Stainless steel EN 1.4404 (AISI 316L) Other materials available on request
Frame material		Carbon Steel P355GH Other materials available on request
Frame painting specification		Painting available for corrosion categories C2L, C4M, C5M

Dimensions



Accessories

**Insulation**

The insulation jacket for SONDEX® fully welded heat exchangers (SAW) is used in different applications with high temperatures and cooling systems.

**Foundation feet for frame**

Connection to frame mounting flange.

**Spare parts**

Please contact your local Danfoss or Sondex sales representative to provide you with information on spare parts, available for SONDEX® fully welded heat exchangers.



**Selection and Ordering**

Please contact local Sondex or Danfoss sales representative for the selection and / or ordering of the heat exchangers, spare parts and accessories.

For contact information please visit <https://www.danfoss.com/en/contact-us>.